

Satilla Park

Manufacturing Site



GRAD Certified Industrial Site

174 ACRES

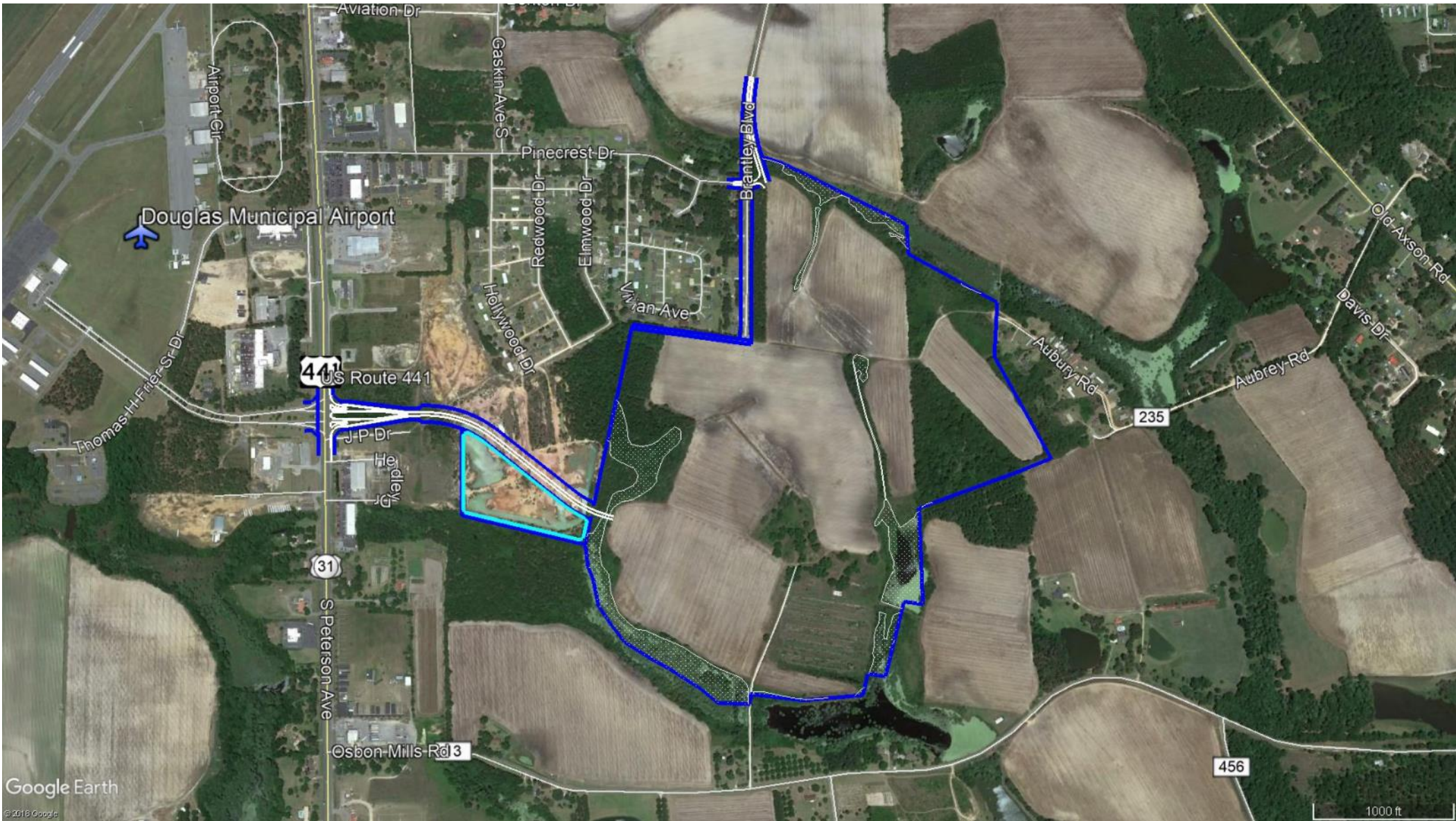
www.douglaseda.com

This park features 174 acres of single-user or sub-dividable property that has earned GRAD certification as a shovel-ready site. Zoned Heavy-Industrial with municipal utilities to property. Direct access to US 441. Across from Municipal Airport.

Close to major ports in Savannah, Brunswick and Jacksonville. Easy access to four Interstates (75, 10, 16 & 95).

Workforce features over 20,500 Manufacturing workers within 60 miles. Over 13,000 workers in Metal Fabrication, Machinery & Equip. and Transportation Equip. Industries!





Douglas Municipal Airport

441 US Route 441

31

S. Peterson Ave

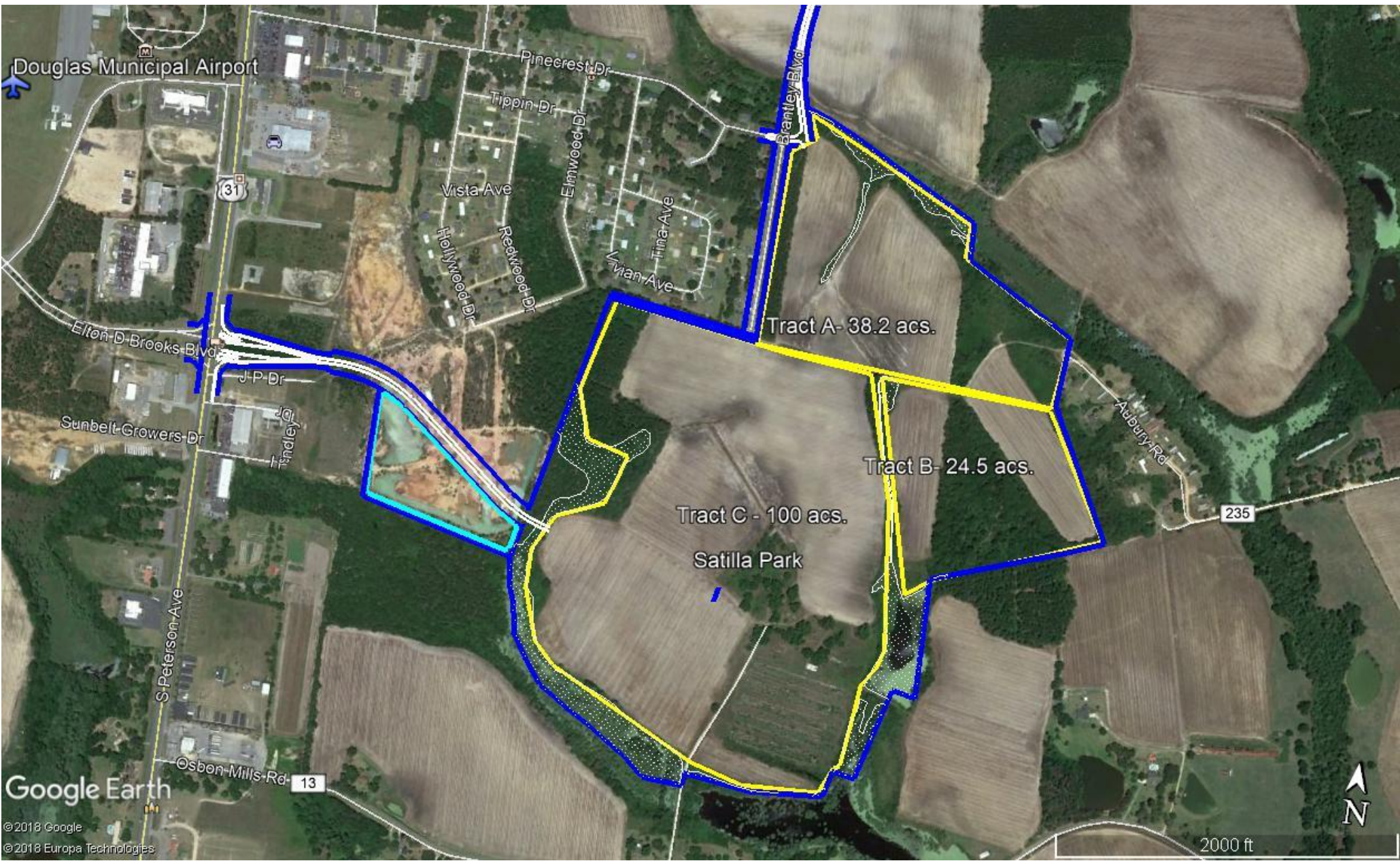
3 Osbon Mills Rd

Brantley Blvd

235

456

1000 ft



Douglas Municipal Airport

31

Tract A - 38.2 acs.

Tract B - 24.5 acs.

Tract C - 100 acs.

Satilla Park

235

Google Earth

© 2018 Google
© 2018 Europa Technologies

2000 ft



